



WORKING IN NUCLEAR:

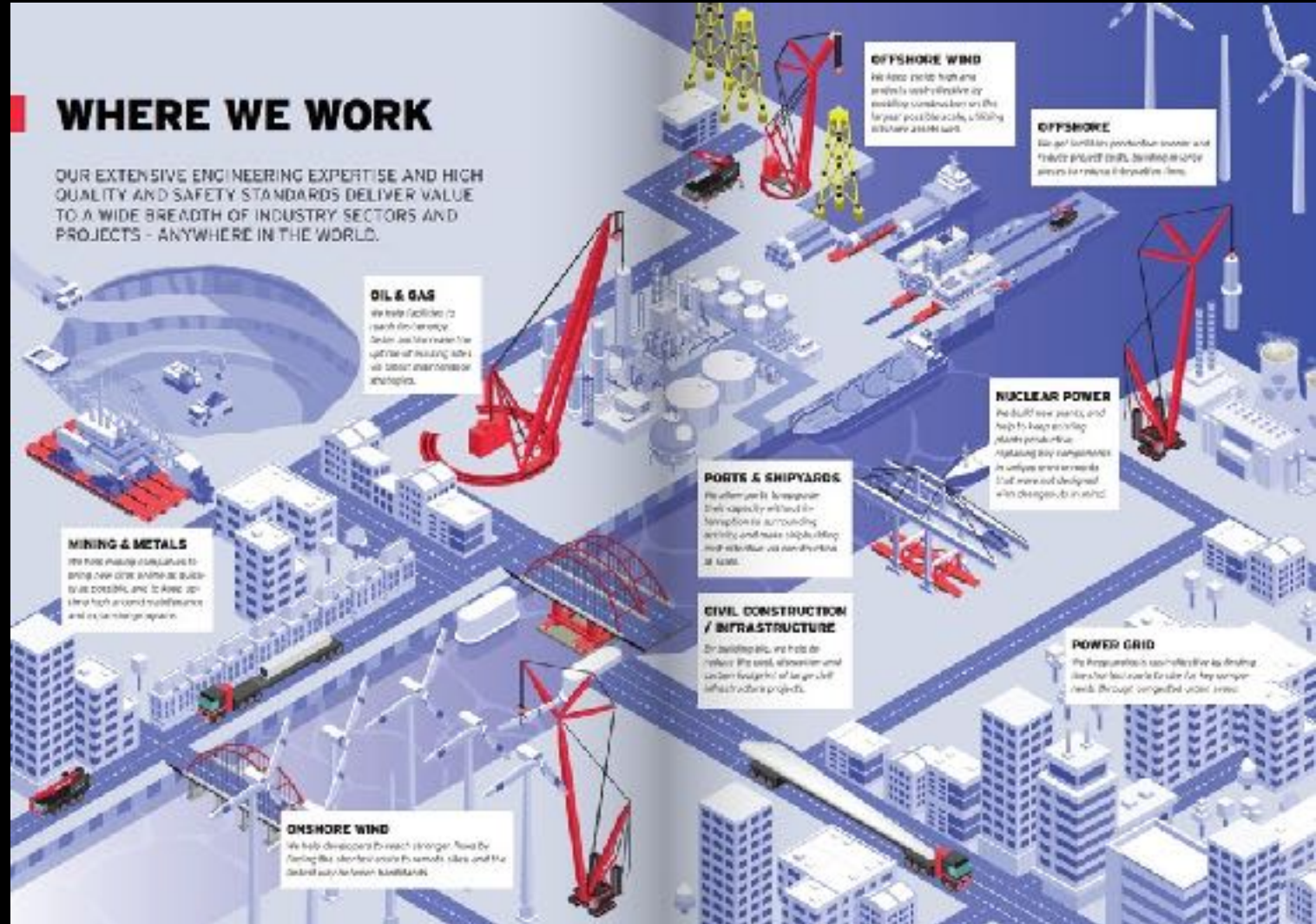
MAMMOET'S PERSPECTIVE ON
CERTIFICATIONS, CHALLENGES, AND WHAT
REALLY MATTERS

MAMMOET

- Founded: May 13, 1807
- Colleagues: 5000
- HQ: Schiedam
- Global offices: Over 120
- Countries: Over 40

LARGEST EQUIPMENT FLEET

- From the smallest city cranes to the strongest crane in the world
- 6 cranes over 5,000t capacity
- 20 cranes over 2,000t capacity
- 5,300 axles of Self-propelled Modular Transporter
- 8,500 axles of road transport trailer



VIDEO PLACEHOLDER

WHY THE NUCLEAR INDUSTRY?

Long-term growth: COP pledge to triple global capacity by 2050 ensures a stable, future-proof market.

Declining alternatives: Traditional sectors like petrochemicals are shrinking, nuclear is rising.

Value-driven opportunities: If you add real value, the market welcomes you.

High standards, high rewards: Not for everyone, quality is critical, but payoff is significant.

Global reach: A truly international market, make it here, make it anywhere.



OUR JOURNEY IN NUCLEAR



HOW MOST COMPANIES SEE NUCLEAR

Too complex

Too many regulations

Too difficult to enter

Requires certifications upfront



**IT'S CHALLENGE
THAT.**

**THE BIGGEST
BARRIER IS
OFTEN
PERCEPTION**



MYTHS

Certifications everywhere!

Reality: Certifications are part of the job, of course, but the process is straightforward and well-supported.

There's always a cost overrun and never on time

Reality: While some high-profile projects grab headlines for delays, most jobs run like any other major project, on schedule and within budget.

It's hard to enter

Reality: Demand is high right now, so entry barriers are lower than they used to be.

Everything is different

Reality: Many aspects are similar to big civil, petrochemical, or oil & gas projects, familiar ground for experienced professionals.

Radiation risk is everywhere

Reality: If radiation is involved at all, it's tightly regulated and managed by the main client, ensuring safety standards are met.



FACTS

Progress is slow at first, then rapid

Large projects require careful planning, but once implementation begins, momentum picks up quickly.

Value creation leads to recognition and compensation

Expert knowledge and effective solutions are acknowledged, and your efforts make a difference.

Collaboration is essential

Achieving success relies on teamwork across various fields and locations.

It's a global effort

Projects involve multiple countries, cultures, and time zones, making international cooperation standard.

Public and worker perceptions are evolving

Attitudes and expectations are changing steadily over time.



SO, WHAT DOES THAT MEAN?

INTERNATIONAL STANDARDS

- What do I need?
 - ISO9001, ISO14001 and ISO45001 are typical.
 - What about ISO19443?

ATTITUDE AND PATIENCE

- Nuclear typically operates to higher quality standards than other industries.
- Requirements for supporting paperwork and proof of competence are high.
- An openness and willingness to work with, rather than against the end customer is the only way to move toward success. Working in collaboration to deliver the end goal.

IS NUCLEAR AN INNOVATIVE MARKET?

- Yes & often willing to invest in development of new products. Especially if these new ideas could be used across multiple sites.
- Also looking at innovations made in other industries and how these could be adapted and deployed into Nuclear.
- But a minor warning, there is no such thing as off the shelf in nuclear. Small adaptations even between similar sites are likely.



KEY LESSONS

Challenging, but achievable
Certification is a journey
Entry does not depend on it

Reactor = relatively small part of project
Majority of work around it

Start where your expertise is
Not in the most complex part
Grow into the sector

Opportunities across Europe
Cross-border approach needed

Don't wait for certification
Build relationships early
Engage with key players
Position yourself early



**“THE BARRIER
IS PERCEPTION -
NOT REALITY”**

QUESTIONS? PLEASE REACH OUT:

**JUSTIN VREUGDENHIL
ALEX SCOTT**

+31 6 21 130 240

Justin.Vreugdenhil@mammoet.com